



The Global Leader in Fleet Management

Element Fleet Management is the **largest pure-play automotive fleet manager in the world**, providing the full range of fleet services and solutions to a growing base of loyal, world-class clients – corporates, governments and not-for-profits – across North America, Australia and New Zealand.

Clients benefit from Element's expertise as the largest fleet solutions provider in its markets, offering **unmatched economies of scale and insight** used to reduce fleet operating costs and improve productivity and performance.

Approximately
1 Million
commercial vehicles
under management

Market Leadership
in North America and
Australia - New Zealand

Diversified
across over **5,500**
clients, **700+** industries,
5 geographies

2,500+
employees
including the industry's
largest team of data
analysts

Over \$1.5B
cost savings
opportunities identified
for our clients in 2020

Proud member of
the National Minority
Supplier Development
Council and the Canadian
Aboriginal and Minority
Supplier Council

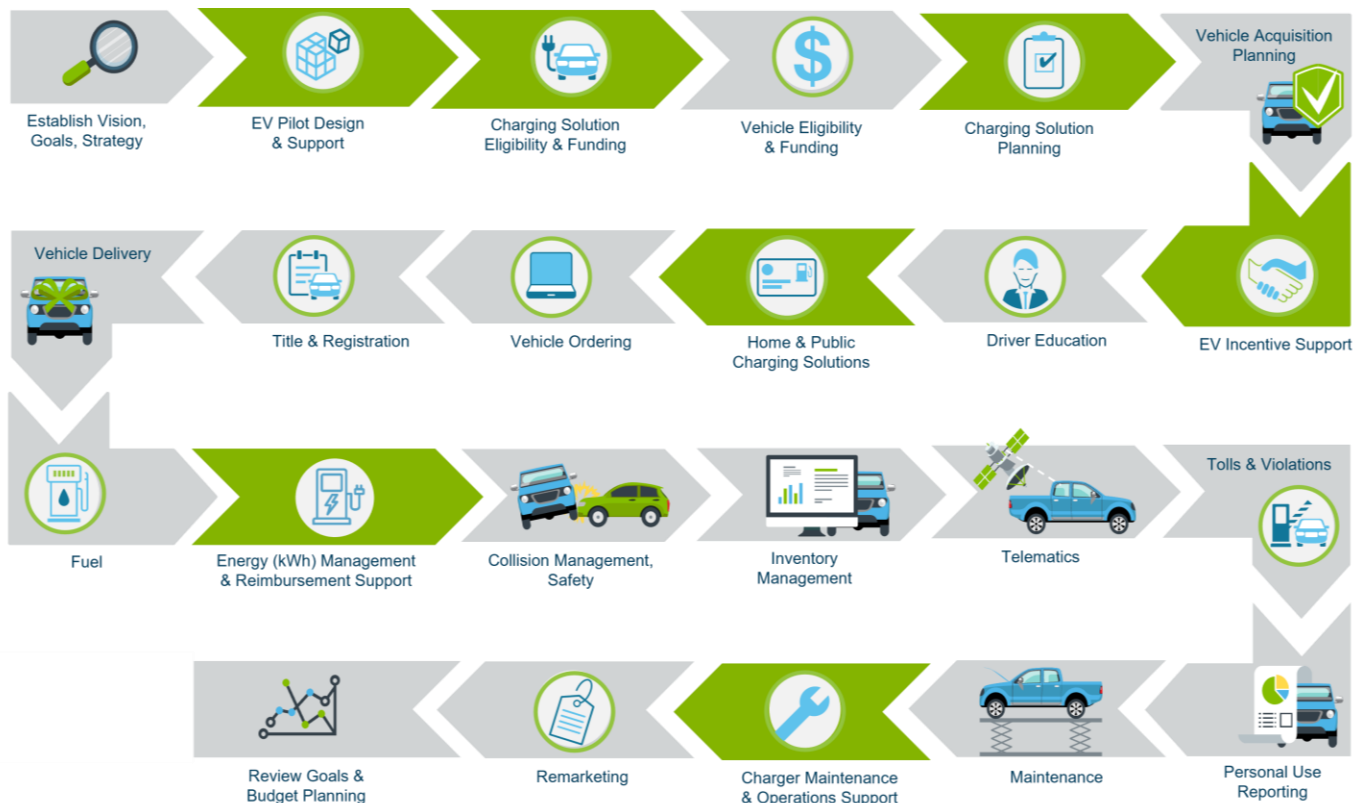
Making a Difference with Electric Vehicle Solutions



Focusing on sustainability and electrification:

Element has built a dedicated team, led by two senior leaders hired in 2020, to further our Electric Vehicle Strategy, highlighting our commitment to shape an industry-leading EV offering, build strong strategic partnerships, and stay ahead of the evolving EV landscape

Wing-to-Wing Support



**All core Element services are fully compatible across ICE and EV models.*



Road transportation accounts for 15% of global greenhouse gas emissions¹. Element's focus on sustainability centers on doing the right thing and enabling others to do so as well.

The Element Advantage

Element offers comprehensive fleet management solutions, unrivaled dedication, and continuous collaboration to help companies gain strategic value from their fleets.



Financial Strength and Resilience:

Our financial strength provides access to capital, funding flexibility to meet changing business needs, and stability to navigate uncharted waters. We help create a financial model that's more strategic and optimized for your business and market environment.



Tailored Solutions and Services:

Our purpose-built fleet solutions and strategic consulting services are designed to meet the unique needs of your business. Our proven track record of improving client performance delivers robust reporting, data benchmarking, and actionable insights designed to improve strategic decision making and deliver the outcomes you desire.



Deep Expertise and Coverage:

As the industry's largest and most strategic fleet network, our clients realize value from our innovative technologies and best-in-class productivity and expense management. Our team of dedicated experts provide 24/7/365 support and fleet leadership allowing clients to simplify internal operations and focus on core business needs.



Superior Client Experience:

Service isn't just something we provide, it's a philosophy we practice. Our robust, stable client management approach means our clients are at the center of everything we do.

For more information about how Element can help you achieve your fleet electrification strategy, contact us at **(800) 665-9744** or **[elementfleet.com](https://www.elementfleet.com)**.